

V-TECK



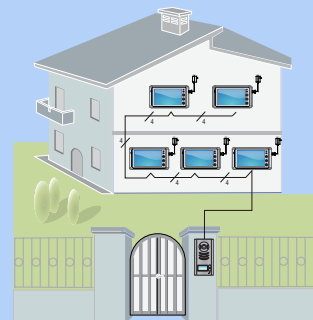
4-ViLa

4-WIRE VIDEO INTERCOM SYSTEM

System Introduction&Product List

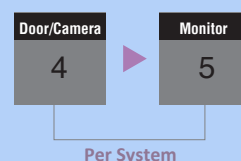
SYSTEM DESCRIPTION

The VT 4-wire system is widely used in houses, villas or small commercial offices, consists of 4 wires as P+(Power),P-(Ground), AU(Audio), VD(Video), a shielded cable of 4x0.5mm² can satisfy 30m distance transmission, it could complete functions of unlock, monitoring, talking, intercom, public memory, photo frame playing, light control,etc.



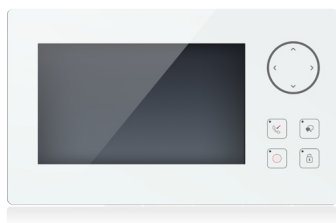
SYSTEM CAPACITY

- Max.5 indoor monitors in one house
- Max.4 door stations or CCTV cameras
- All monitors and door stations are compatible each other



INDOOR MONITORS

VT97M



VT27



VT47MQ



OUTDOOR STATIONS

VT595



VT591



VT592



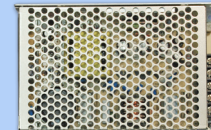
ACCESSORIES



PS4-24V
power supply



VT-MDS
multi cameras switch



PS5-24V
power supply

VT47MQ&VT595 Kit Features



Languages and icons

Multi- languages and menu icons customization for different users.

Intercom communication

Public intercom and point to point intercom.

Picture & video memory

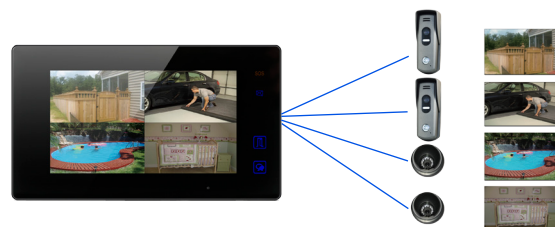
Built-in flash picture storage, SD card extended video storage.

Ring distinguish

Calling tone distinguish between different door stations.

Video quad splitter

Max.4 surveillance images in one scene for safer life.



- Zinc alloy housing;
- High resolution color CCD camera;
- Wide angle camera with 105°;
- High white led for night view;
- Surface wall mounting;
- IP 55 waterproof protection.



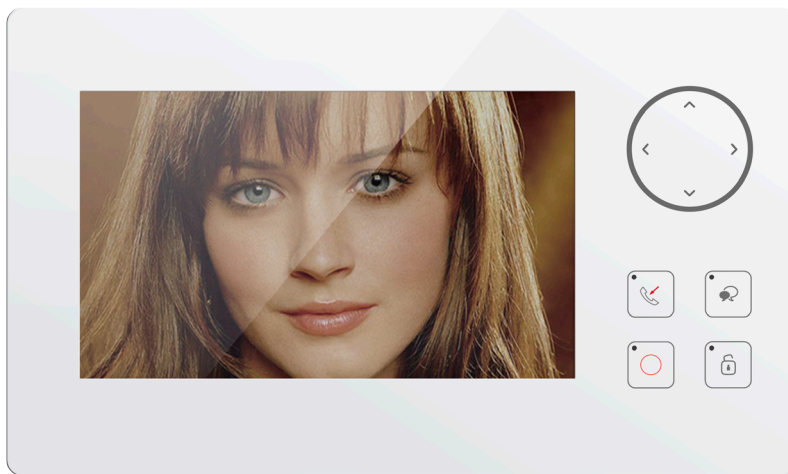
30° angle bracket supplied separately



Kit box



VT97M&VT591 Kit Features



Glass panel design

2.5mm thickness glass front panel.

Touch Sensor Operation

Graceful and convenient interface operation.

Ring distinguish

Calling tone distinguish between different door stations.

SMPS Power Supply

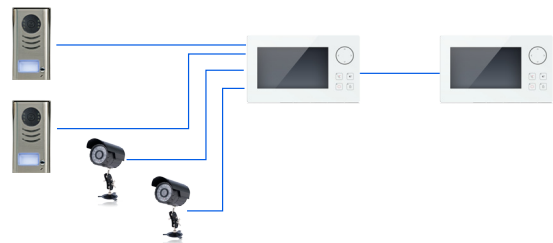
Built-in SMPS for friendly home decoration.

Picture & video memory

Built-in flash picture storage, SD card extended video storage.

Camera & doorstation control

Built-in two cameras and two door stations control.



- Pinhole-lens camera;
- Zinc alloy housing;
- Camera's angle is adjustable;
- Name plate display with white led background;
- Surface wall mounting by a rain cover;
- IP 43 waterproof protection;
- VT592 with two call buttons for two families;

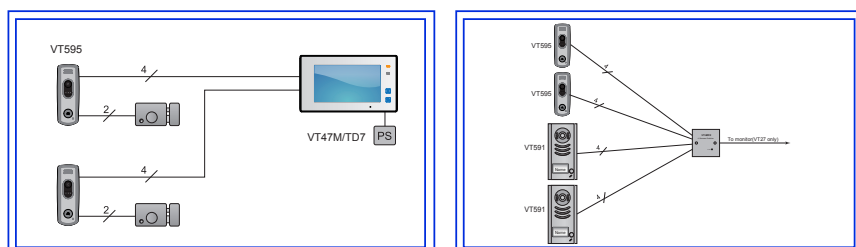


Kit box

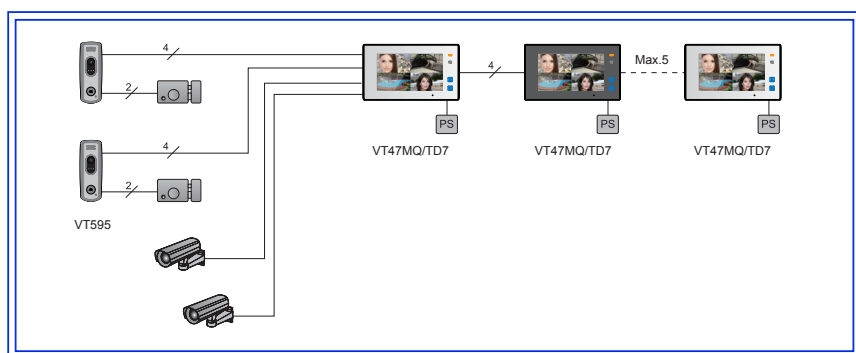


WIRING DIAGRAM

Extendable Configuration



Video Quad Splitter Configuration

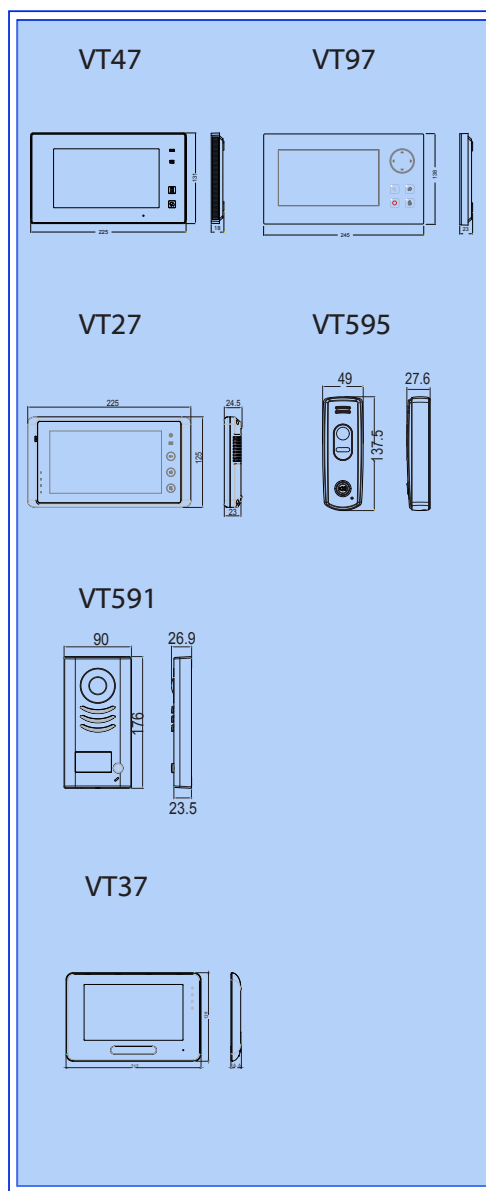


Customized Area



UNIT DIMENSIONS

Unit: mm





Guangzhou Video-Tech Electronics Co., Ltd

F6/No.7 building ,Huangzhou Industrial Area,
Chebei Road,TianHe district,Guangzhou, China

T +86 / 20 / 38261205

F +86 / 20 / 38628806

www.v-tec.cn